

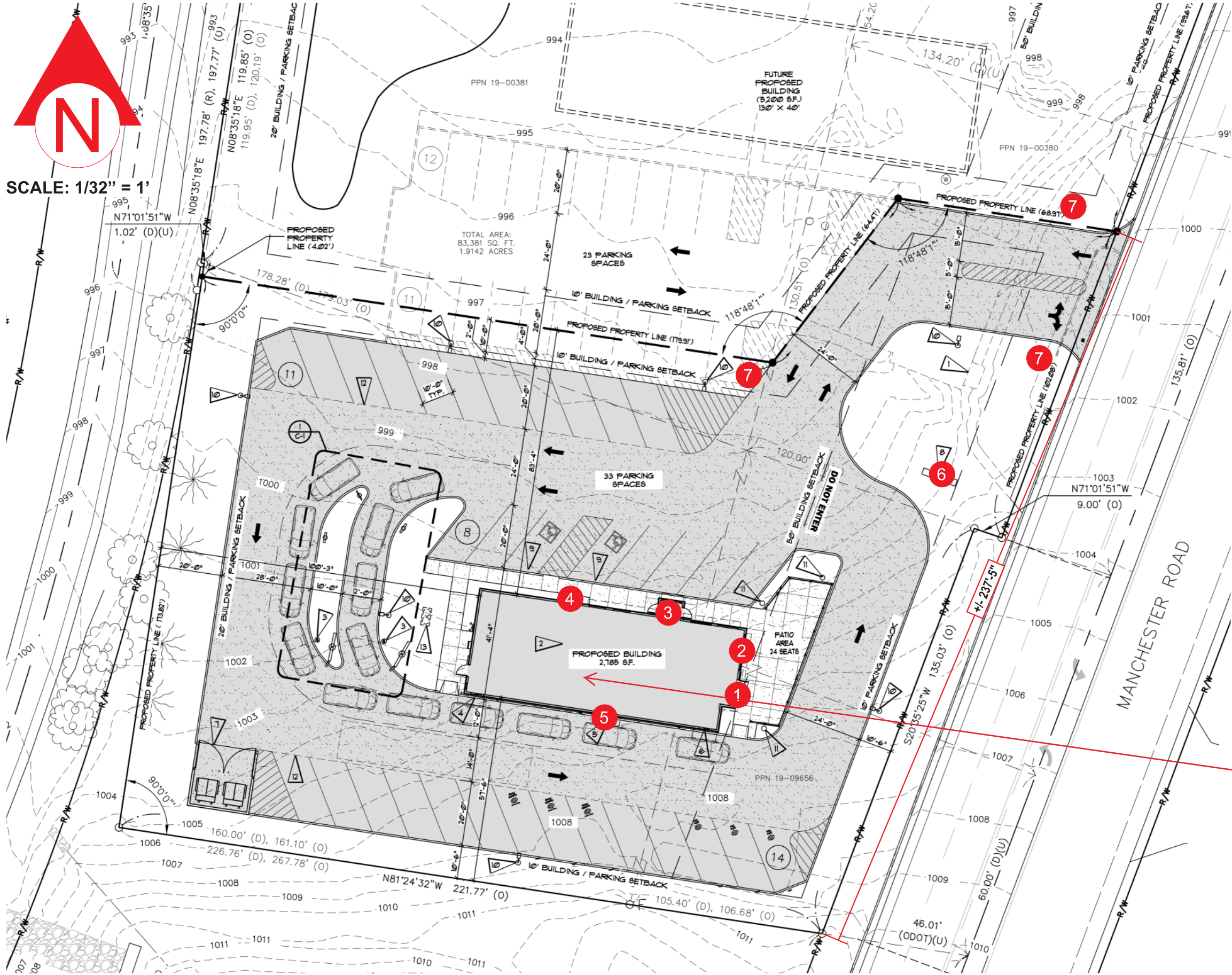


AKRON, OH





SCALE: 1/32" = 1'



INN CODE: 71294

DAIRY QUEEN
3040 MANCHESTER RD
AKRON, OH 44319

PROPOSED SIGNS:

- 1 4'-3" X 6'-6" MBL WALL SIGN
- 2 18" CANOPY CHANNEL LETTERS
- 3 4'-3" X 6'-6" MBL WALL SIGN
- 4 18" CANOPY CHANNEL LETTERS
- 5 4'-3" X 6'-6" MBL WALL SIGN
- 6 5'-6 1/4" X 8'-5 9/16" PYLON
W/ 2'-0" X 10'-11" G & C BOWTIE
& 3'-8" X 6'-9" 10mm WF EMC
AT 22'-0" OAH
- 7 1'-3" X 2'-1" DIRECTIONAL
AT 3'-9" OAH (QTY 3)

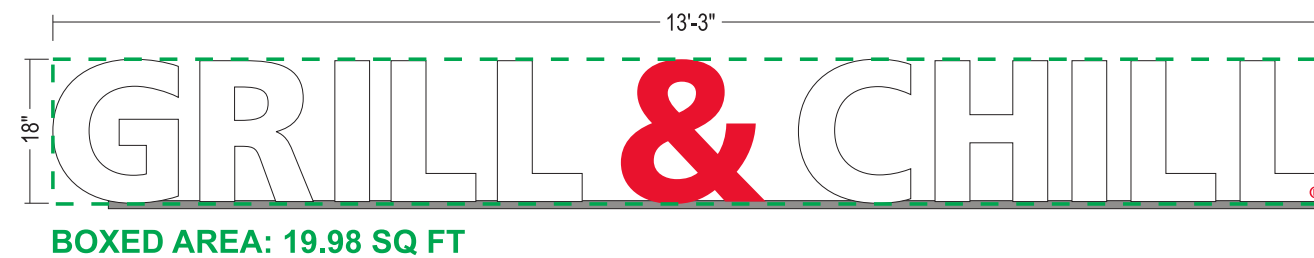
Remove signs
3, 4 & 5

SCALE: 3/16" = 1'-0"

Architectural elevation drawing of a Dairy Queen Grill & Chill storefront. The drawing shows a central entrance with a door and two large windows, flanked by side sections with smaller windows. The facade features a mix of tan, brown, and orange panels. A large red and white 'DQ' logo is centered above the entrance, with 'GRILL & CHILL' in white text on a red background. The drawing includes numerous callouts for materials (e.g., Metal Panel, Metal Coping), colors (e.g., Field Color 1, Accent Color 2), and dimensions (e.g., +/- 38'-8", 18'-3"). It also shows details like the metal eyebrow feature, fabric awning, and storefront door/window assembly.

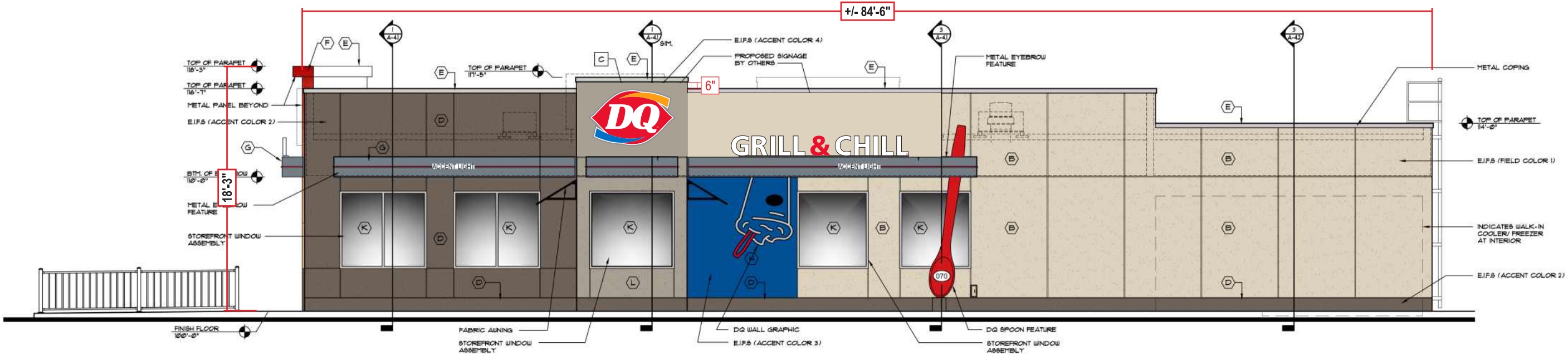


MBL WALL SIGN DETAIL
SCALE: 1/2" = 1'-0"



G&C CHANNEL LETTER DETAIL
SCALE: 1/2" = 1'-0"

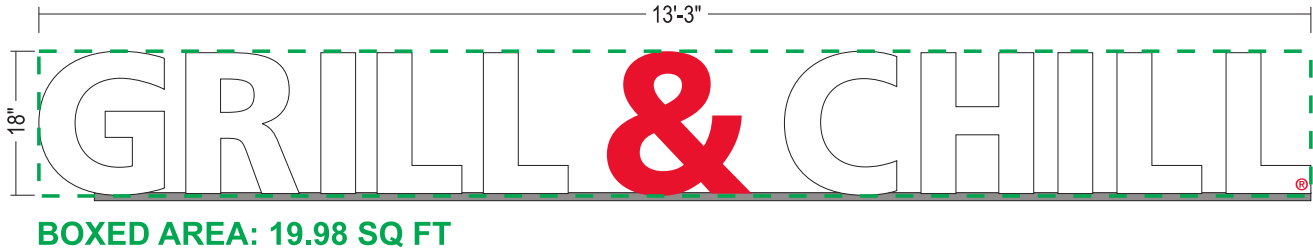
NORTH ELEVATION
SCALE: 1/8" = 1'-0"



Both signs (3 & 4 are being removed

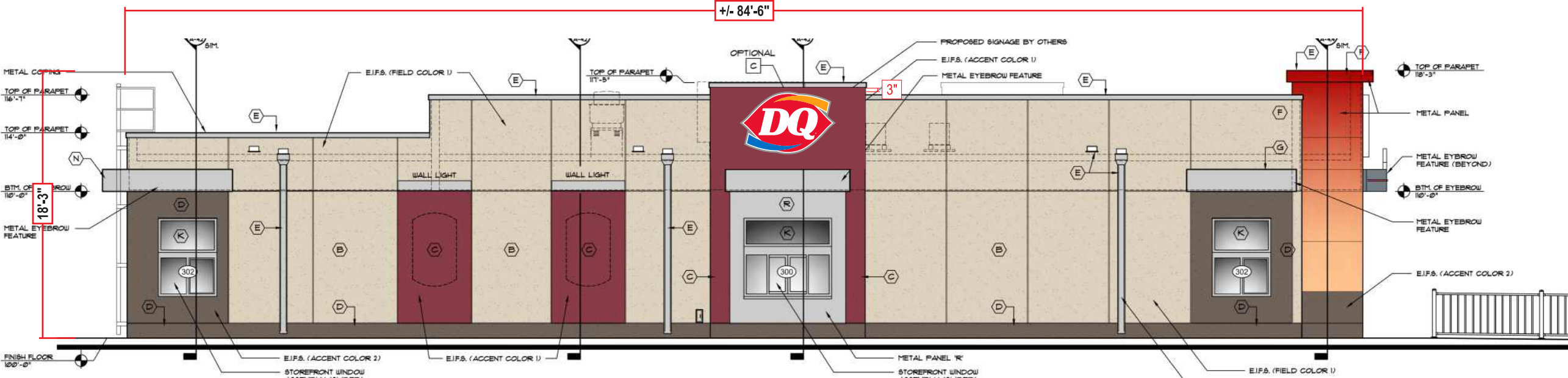


MBL WALL SIGN DETAIL
SCALE: 1/2" = 1'-0"
3



G&C CHANNEL LETTER DETAIL
SCALE: 1/2" = 1'-0"
4

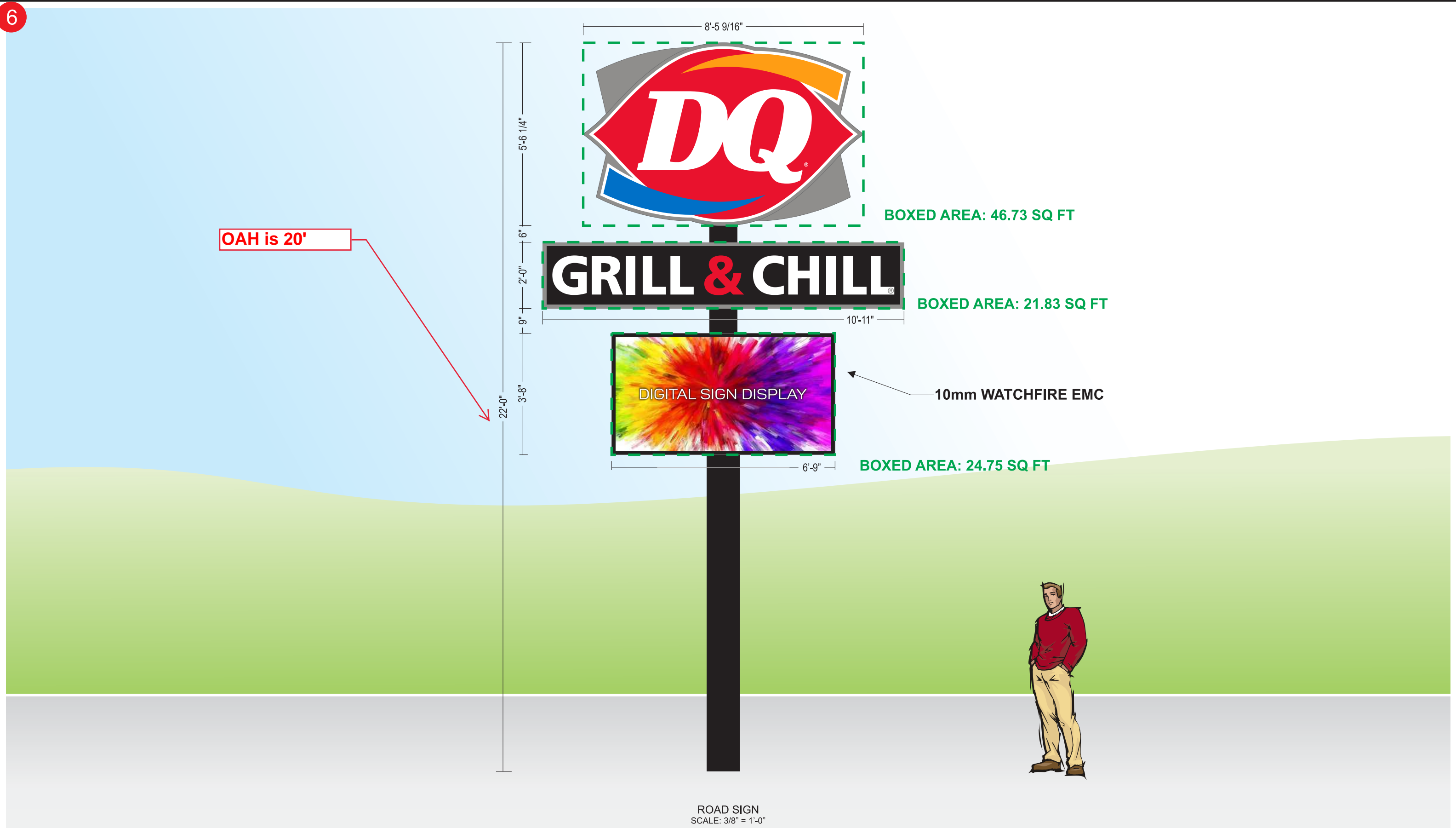
SOUTH ELEVATION
SCALE: 1/8" = 1'-0"



Sign 5 is being removed

MBL WALL SIGN DETAIL
SCALE: 1/2" = 1'-0"

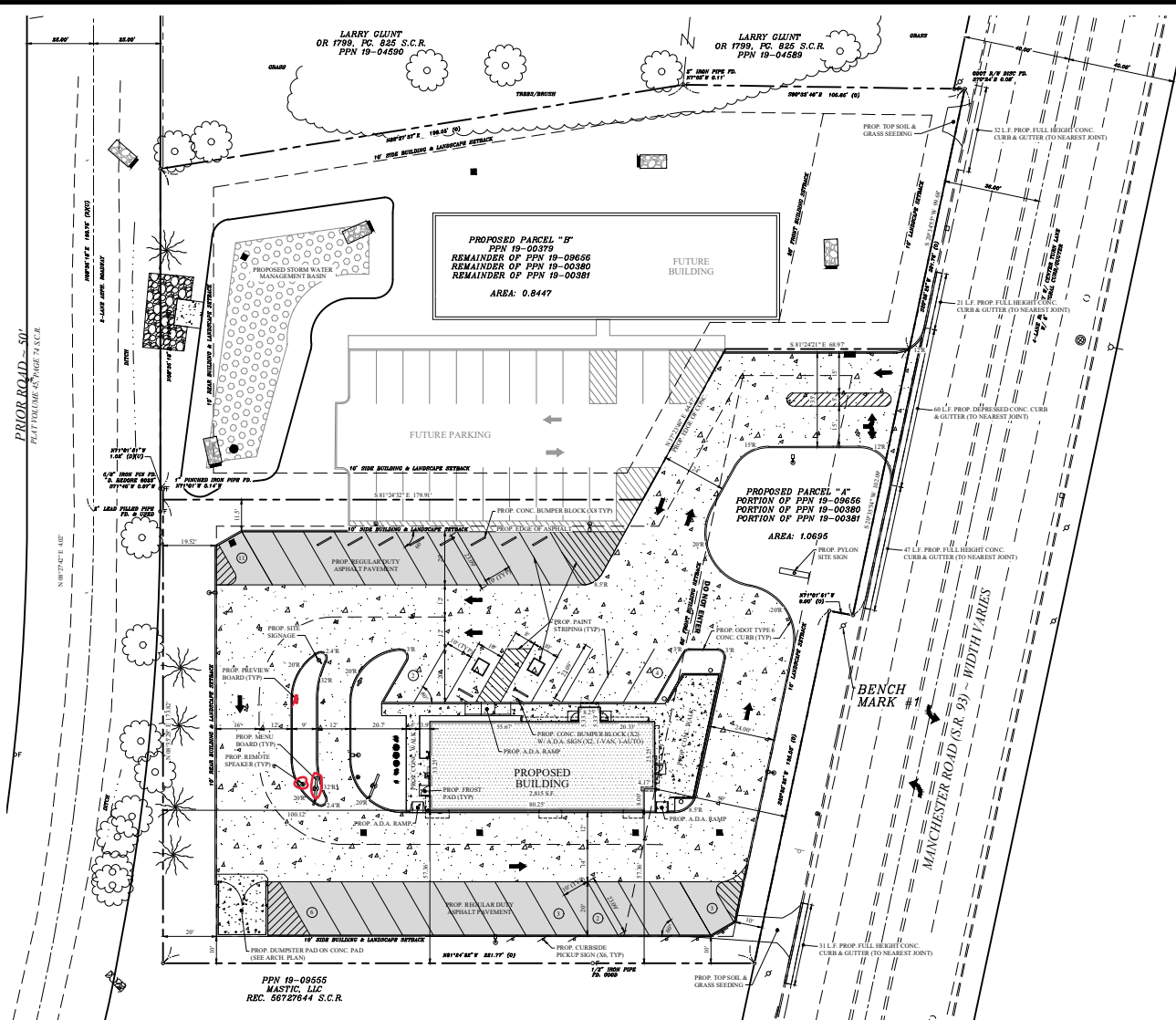
5



ROAD SIGN
SCALE: 3/8" = 1'-0"

OPTION 2

<div><div>persona</div><div>SIGNS LIGHTING IMAGE</div></div>	<div>Persona Signs, LLC</div> <div>700 21st Street Southwest</div> <div>PO Box 210</div> <div>Watertown, SD 57201-0210</div> <div>1.800.843.9888 • www.personasigns.com</div>	<div>Customer:</div> <div>DAIRY QUEEN</div>	<div>Project No.:</div> <div>407565</div>	<div>Request No.:</div> <div>62243</div>	<div><div><div>UL</div></div><div>This sign is intended to be installed in accordance with the requirements of Article 600 of the National Electric Code and/or other applicable local codes. This includes proper grounding and bonding of the sign.</div></div> <div><div>This is an original document created by Persona Signs, LLC provided specifically to the client for the client's personal use. This document should not be shared, reproduced, disclosed or otherwise used without written permission from Persona Signs, LLC.</div></div>	<div>Customer Approval (Please Initial):</div>
		<div>Location:</div> <div>AKRON, OH</div>	<div>Prepared By:</div> <div>QP/AHD</div>			<div>Approval Date:</div>
		<div>File Name:</div> <div>407565 - R2 - AKRON, OH</div>	<div>Date:</div> <div>08/06/24</div>	<div>Revision:</div> <div>2</div>		
		<div>This is an original document created by Persona Signs, LLC provided specifically to the client for the client's personal use. This document should not be shared, reproduced, disclosed or otherwise used without written permission from Persona Signs, LLC.</div>				



SITE BENCH MARK
BENCH MARK #1
NAIL IN UTILITY POLE
ELEVATION = 1005.38

SITE DATA

USE DISTRICT = B-3
(GENERAL / REGIONAL
BUSINESS DISTRICT)

SITE AREA = (1.9142 AC.)

PROP. BUILDING AREA = 2,815 S.F. (FOOTPRINT)

BUILDING SETBACKS:
FRONT YARD = 50'
SIDE YARD = 10'
REAR YARD = 10'

LANDSCAPE SETBACKS:
ALL YARDS = 10'

NUMBER OF PARKING SPACES:
REGULAR PARKING SPACES = 25
CURBSIDE PICKUP SPACES = 6
HANDICAP PARKING SPACES = 2
TOTAL PARKING SPACES = 33

FLOOD ZONE

FLOOD ZONE "C" PER FLOOD INSURANCE
RATE MAP NUMBER 30153C 0051 F
COMMUNITY PANEL NUMBER 30153 0051 F
EFFECTIVE DATE APRIL 19, 2016

LEGEND



ITALIC TEXT REPRESENTS EXISTING CONDITION
NON-ITALIC TEXT REPRESENTS PROPOSED CONDITION

BID ALTERNATIVE:

ALL CONCRETE PAVEMENT



GRAPHIC SCALE



WEBER ENGINEERING SERVICES
Where Strong Relationships & Superior Service Guide Your Project

2555 Hartsville Rd., Suite B
Rootstown, OH 44272
www.WeberEngineeringServices.com
330.329.2037
matt@webercivil.com



Reg. No.: 61709

CLIENT:

DAVID PELLIGRA
and architects, inc.

2231 Broad Blvd.
Cuyahoga Falls, Ohio 44223

OWNER:

PARFAIT PROPERTIES, LLC

715 PORTAGE TRAIL
CUYAHOGA FALLS, OHIO
44221

**DAIRY QUEEN GRILL & CHILL
SITE IMPROVEMENTS**
3040 MANCHESTER RD., COVENTRY TWP., OH

Issue Date
07-26-2024

**SITE
PLAN**

C102

Project No. 2024-139

LED Pre Sell Menu Board

NOTES:

- 1) Housing Constructed of Aluminum Extrusion Welded
- 2) Door Frames Will Be Extruded Aluminum
- 3) Door Plex Will Be 1/8" Non Glare Acrylic
- 4) Entire Board Powder Coat Silver

NOTES:

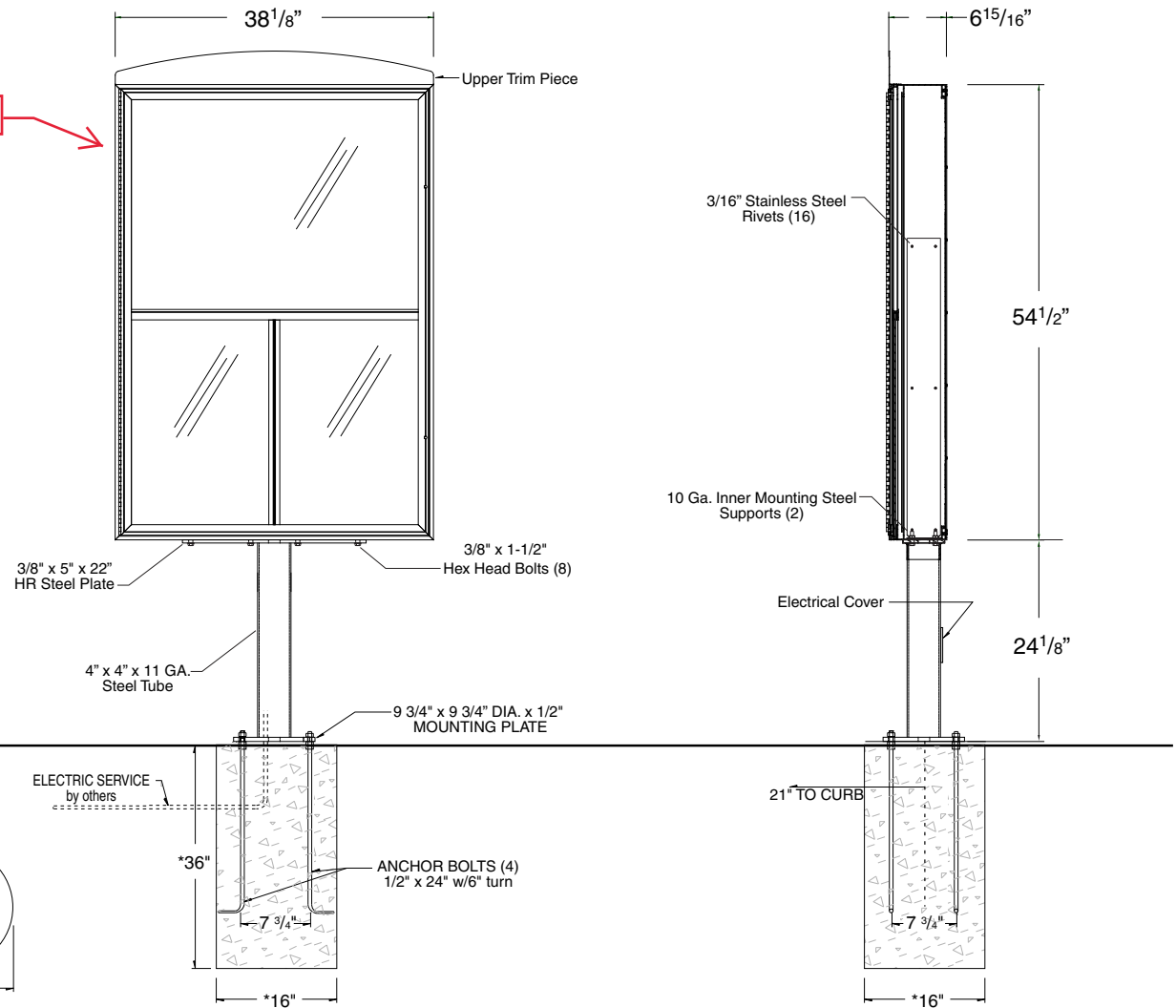
MATERIALS:

All Joints To Be Welded All Around
Grade A36 Steel Shapes
Grade A500 B Steel Tube

14.43 sf

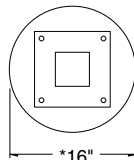
MICROPHONE AND SPEAKER FOR CURBSIDE OPTION ONLY

THIS SIGN IS UL/CSA LISTED



***NOTE: These are approximate foundation measurements. The soil bearing capacity at the erection site must be considered when designing the foundation. The sign manufacturer is not able to predetermine the specific needs of each location. Consult a local engineer for design specifications.**

***NOTE: This is a suggested plan. Local requirements may exceed this design. The contractor is responsible to verify this plan.**



LED Pre Sell

VOLTS: 1.0 Amps. @ 120 VAC 60Hz

Drawing Type Art Creative

Customer Dairy Queen

Project Description LED Pre Sell Spec

Drawn By: DL

Proj. Man.:

Date: 06/22/18

Proj. No.:

Note:



LED Drive-Thru Menu Board with Adder

47.80 sf

NOTES:

- 1) Housing Constructed of Aluminum Extrusion Welded
- 2) Door Frames Will Be Extruded Aluminum
- 3) Door Plex Will Be 1/8" Non Glare Acrylic
- 4) Entire Board Powder Coat Silver

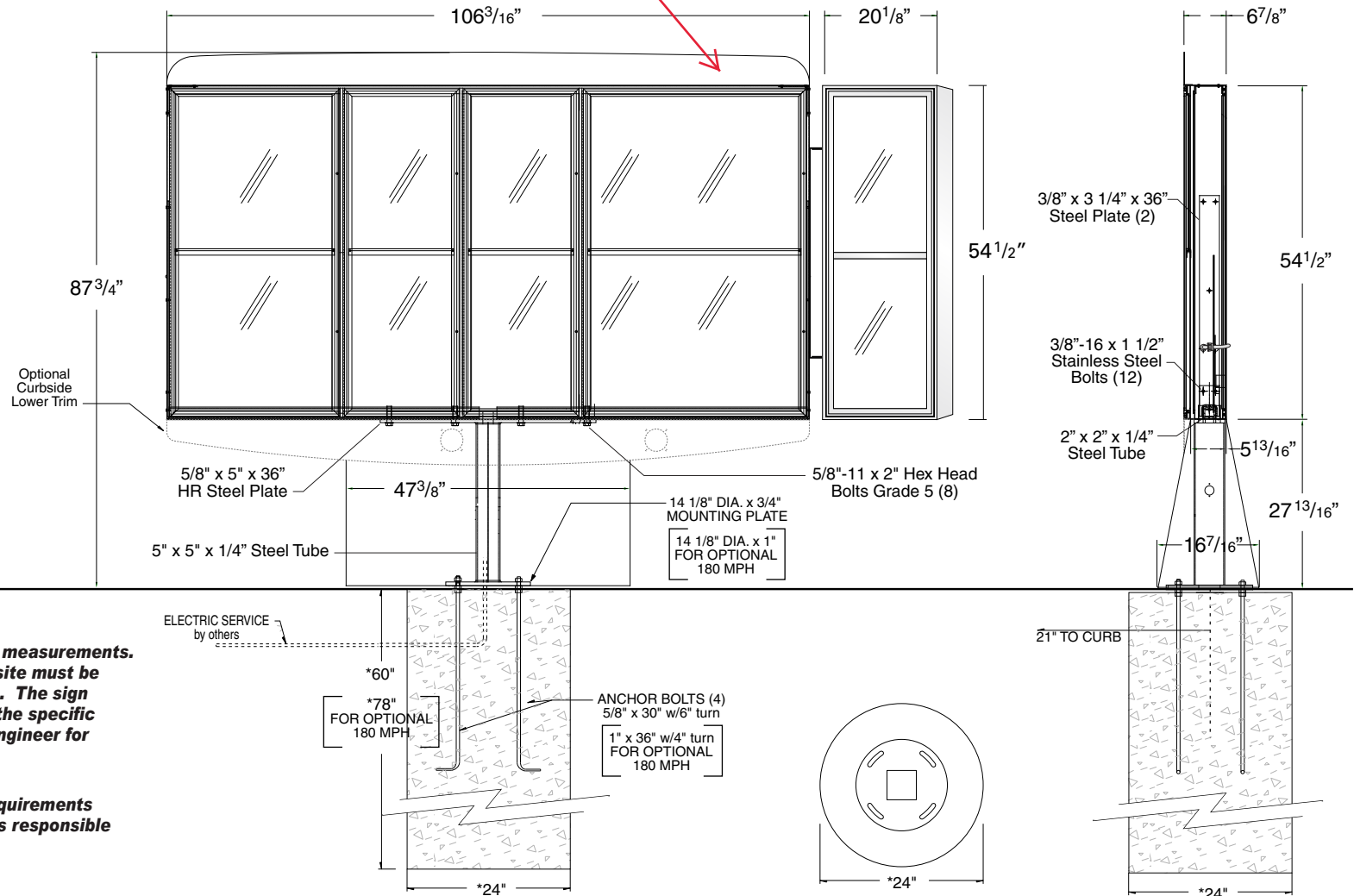
NOTES:

MATERIALS:
All Joints To Be Welded All Around
Grade A36 Steel Shapes
Grade A500 B Steel Tube

MICROPHONE AND SPEAKER FOR CURBSIDE OPTION ONLY

THIS SIGN IS UL/CSA LISTED

STANDARD WIND LOAD: 110 mph



***NOTE: These are approximate foundation measurements. The soil bearing capacity at the erection site must be considered when designing the foundation. The sign manufacturer is not able to predetermine the specific needs of each location. Consult a local engineer for design specifications.**

***NOTE: This is a suggested plan. Local requirements may exceed this design. The contractor is responsible to verify this plan.**

Drive Thru

VOLTS: 3.0Amps. @ 120 VAC 60Hz

Adder

VOLTS: .50Amps. @ 120 VAC 60Hz

Drawing Type Art Creative

Customer Dairy Queen

Project Description 4 Door LED DT Spec

Drawn By: DL

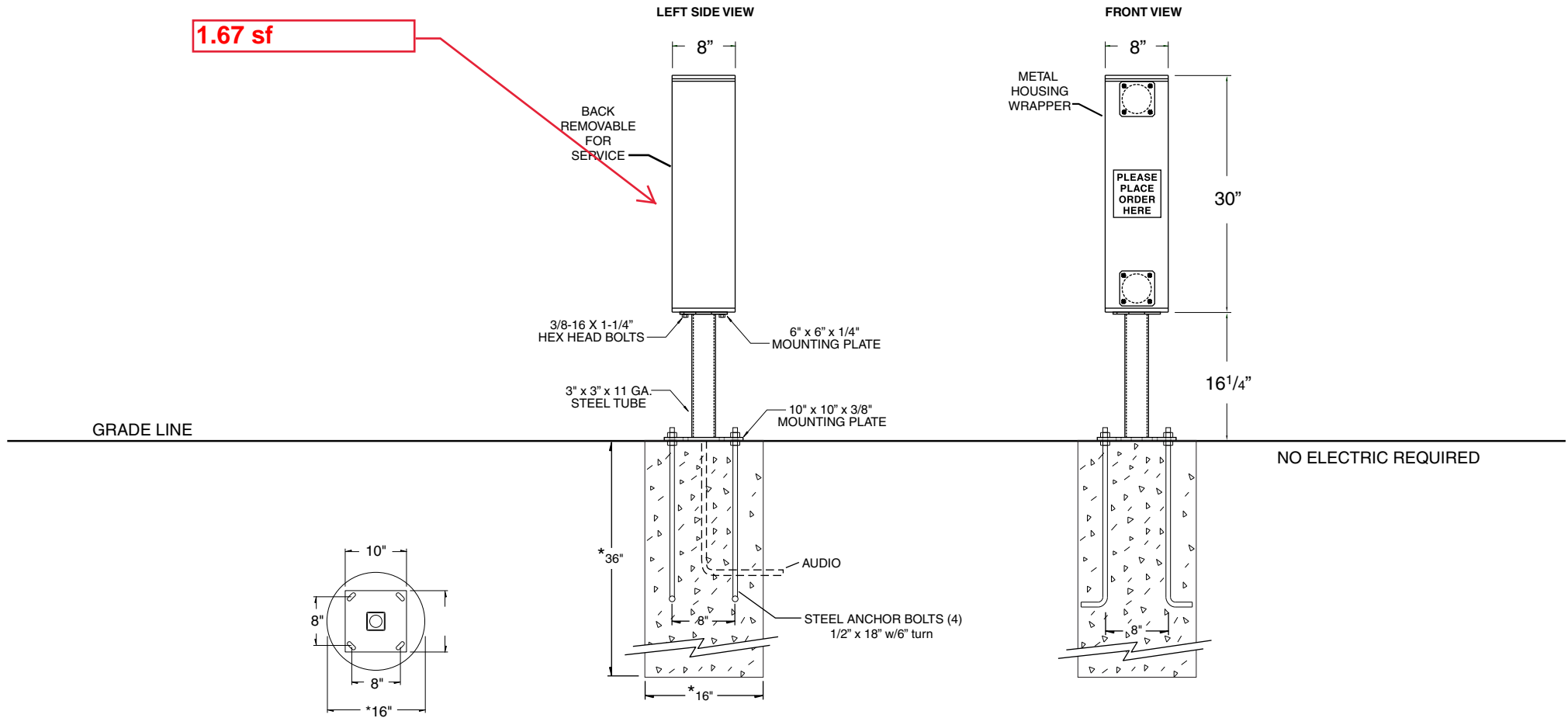
Proj. Man.:

Date: 06/22/18

Proj. No.:

Note:





Drawing Type Art Creative

Customer Dairy Queen

Project Description Speaker Post Spec

Drawn By: DL

Proj. Man.:

Date: 06/22/18

Proj. No.:

Note: ★ **These are approximate foundation measurements.**

The soil bearing capacity at the erection site must be considered when designing the foundation. The sign manufacturer is not able to predetermine the specific needs of each location. Consult a local engineer for design specifications.

